



Early Literacy Station™

Opening the Door to a Lifetime of Learning



What's New in Version 7?

New Content

Version 7 features exciting new titles that enhance the ELS subject areas of reading, math, art, and music. Kids can create photo slideshows, learn how to count money, sharpen their words and numbers skills, solve problems, and make their own music.

- Giggles Toddler My Music World
- Giggles Toddler ABCs and 123s
- PhotoKit Junior
- Graph Club 2.0
- Read, Write & Type!
- Math Doodles
- The Tortoise & the Hare
- Little Monster at School
- Arthur's Teacher Trouble



New Interface Fun

Kids can flex their creative powers by choosing their own interactive themes, skins, and avatars. They feel in control of their experience, which empowers them and helps the learning process!



All-in-One Touch Screen

In addition to the standard monitor, laptop and Classmate hardware options, a touch screen edition is now available. This new feature enables young children to engage in activities by touching a colorful screen. They don't need to use the keyboard or mouse! Also includes built-in camera functionality (which can be disabled) to let kids take photos for use sign-on identification and art projects.



Enhanced New Release License Program

The New Release License program ensures you get new updates and content automatically.

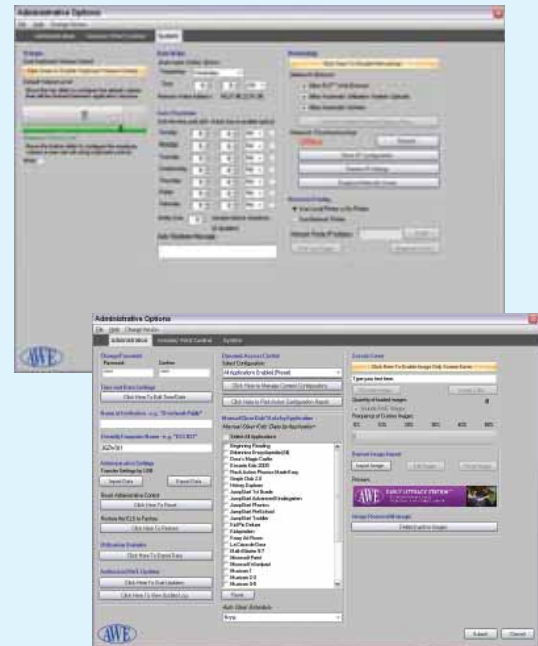
And now, the New Release License includes the **ELF Child-Safe Browser™**! You can give your users free access to the ELF Browser at your facility and at their home.



More Features in the Learning Center Edition

The Learning Center Edition now features:

- More content directly into the Learning Management System
- Hundreds of supplemental learning materials for teachers and kids that are tied to state and national standards
- Interactive White Board support and touch enhancements
- Dynamic lesson planning, scheduling, user session-times settings, network printing, and specific program access controls
- Integration of camera for multimedia learning
- Teachers can create and edit pictures and create slideshow of activities like field trips



Quick Facts about the Standard ELS

The standard Early Literacy Station comes as a stand-alone unit with no Internet connection needed. Simply plug it in and it is ready to be used by kids!

It is designed to be intuitive and to empower kids to want to learn!

- The ELS is available on various hardware platforms: Touch-screen, standard monitor, laptop and Classmate. Plus, it is available as a software license as well for use on your existing computers
- Imaginative interface that is easy to navigate
- Most programs incorporate hidden assessments to guide growth
- Simple administrative functions that give you behind-the-scenes control
- Little or no adult intervention required
- 50+ top-rated dynamic titles
- One up-front purchase cost (excluding New Release License)
- Free printer, cables, and 3-year extendable warranty
- The ELS grows with a child based on their learning needs
- New Release License keeps the system current and error-free
- Promotes self-directed learning
- Takes the guess work out of selecting education software titles
- Taps into the power of intrinsic motivation